



# PALM VEIN

RECOGNITION

Revolutionizing Security  
for the Future

# CATALOGUE

---

- 01** Are You Really Safe?
- 02** A Major Security Breach on the Horizon
- 03** What Can You Do to Strengthen Your Security Barriers?
- 04** Make Yourself Comfortable in a Safe Manner
- 05** Safety Is More Than Just Yourself—  
Make a Difference Around You
- 06** Invest in Your Security  
—The M7 Palm Vein Recognition System

## Are You Really Safe?

In this digital age, the massive amount of information exchanged on the Internet has triggered unprecedented cybersecurity challenges. As we put sensitive personal data and financial transactions at the disposal of digital systems, the need for robust data protection measures has become more urgent than ever. Security concerns are at the forefront of modern life, but have you asked yourself if the system you rely on is safe enough? Are you using non-biometric or biometric access systems?

Let's explore the merits and challenges of different approaches:

Access Method	Merits	Demerits
Key / Lock	Simple, widely available	Can be lost or duplicated
RFID Card / Badge	Easy to use, low-cost	Risk of theft or copying
Password / PIN	Familiar to users	Vulnerable to hacking and leaks
Biometrics (general)	Difficult to forge, unique to users	Risk of data breaches, costlier to implement

Being the measurement and statistical analysis of human physical and behavioral characteristics, biometrics provides a unique and highly secure method of identification. It has become one of the safest means of securing information. Biometrics is changing our perception of authentication and security with its unique advantages. If you've already adopted biometric technology, which method do you use? How smoothly does it function during daily access? Each biometric technology comes with unique benefits and limitations:

Biometric Method	Speed	Accuracy	Security Level	Contact Required?
Facial Recognition	High	Moderate	Medium	No
Fingerprint	Medium	High	Medium	Yes
Palmprint	Medium	High	Medium	Yes
Palm Vein	High	Very High	High	No

Choosing the right biometric technology for a specific industry application enhances both security and user experience. Since different biometric solutions offer varying levels of security and comfort, it's crucial to analyze which option aligns best with your application's needs.

Factors such as environmental conditions, societal impact, performance requirements, and system capabilities must all be carefully evaluated. The ideal solution depends not only on these factors but also on the security demands of your industry and the unique needs of your application, ensuring a tailored approach for optimal results. For instance :

Industry	Security Needs	Typical Measures
Banking	Extremely High - data and cash protection	Biometric ID, multi-factor access
Government	National security and classified information	Advanced biometric systems
Data Centers	Safeguarding critical infrastructure	Multi-layer security solutions
Warehousing	Loss prevention and stock management	RFID, video surveillance
Retail	Theft prevention and customer safety	Surveillance and biometrics

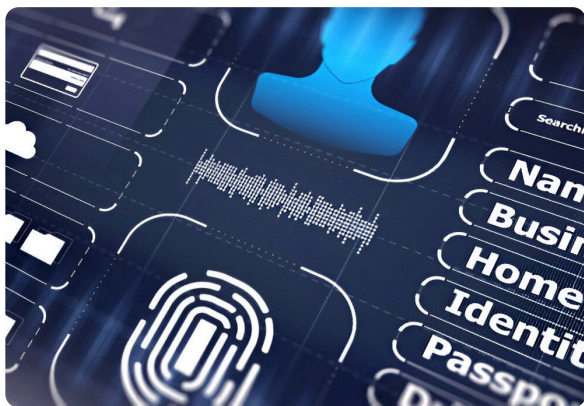
## A Major Security Breach on the Horizon

Despite advances in technology, security breaches still loom over industries worldwide. Consider these recent incidents:

### Sensitive data leaks

Mismanagement of access systems in financial institutions, classified industries, and supervisory sites led to massive identity thefts.





### Biometric information replication

Hackers successfully copied fingerprint data, compromising personal accounts. There have been several cases of test substitutions using copied fingerprint films in school exams, as well as news stories of fraudulent use of face information copied through pseudo-technology.

### Mistaken identification

Conducting criminal investigations and analysis of crimes and terrorist violence resulted in false arrests, lawsuits, and reputational damage due to errors in judgment by biometric systems.



Mismatches between security technologies and industry needs often leave systems vulnerable, opening the door to breaches. Are you still confident your systems are immune to such risks?

## What Can You Do to Strengthen Your Security Barriers?

### Choose Biometrics

The security benefits of biometrics are clear. Traditional security measures such as passwords and PINs can be forgotten, guessed, or stolen. In contrast, biometrics are inherently personal and more difficult to copy or steal, offering a highly personalized and unique level of security. They are:



#### Unique

Each person's biometric data is one-of-a-kind.



#### Convenient

No need to carry or remember anything.

## Choosing Palm Vein Recognition

The palm vein recognition technology is a new generation of biometric identification technology. It recognizes the human body's internal hidden biometric features like vein information with the help of infrared technology. Being the newest form of biometric security, it has lots of unique advantages:



### Privacy and security

Imaged inside the human body where it cannot be seen by the naked eye, palm vein images cannot be easily copied or stolen. Even high-quality photographs or 3D prints cannot imitate a person's live palm vein image.



### Adaptability

Unaffected by direct light, wet hands, or finger injuries, it is suitable for all skin tones and textures, delivering a high level of accuracy across various conditions.



### User acceptance

Since palm vein recognition is non-contact, the user only needs to hover their palm over the sensor, so the user experience is better streamlined and comfortable.



### Regulatory constraints

Since palm vein recognition is a relatively new technology, many regional and national regulations do not yet specify restrictions on its use.



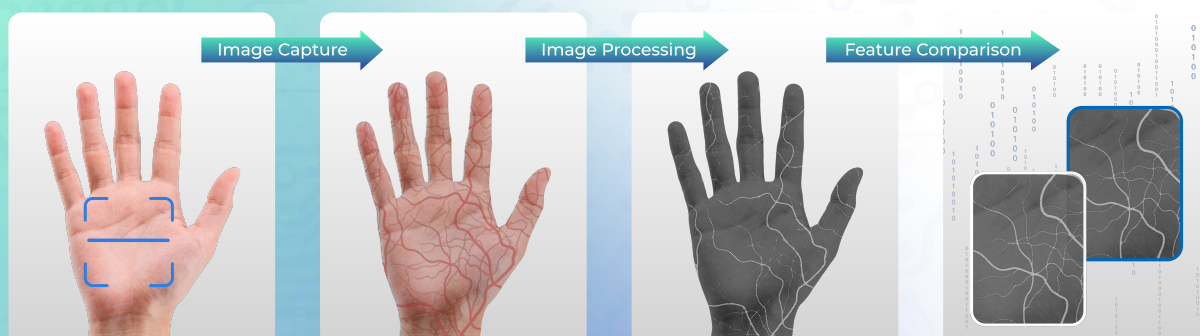
### System cost

Although the initial equipment investment may be high, the high accuracy and low false recognition rate may reduce the overall maintenance cost in the long run.



### Data privacy encryption

The palm vein recognition sensor uses near-infrared light to capture a person's palm vein pattern and then generates a unique biometric template as an authentication enhancement. The template is immediately encrypted in the sensor before data transmission, and the data template cannot be reversed back to the palm vein image.



## Make Yourself Comfortable in a Safe Manner

IN A SAFE MANNER



Palm vein technology does more than offer the highest level of security. It streamlines the entry process with a no-contact method that keeps it free from germs, making it ideal for public spaces and healthcare environments. Access feels smooth and effortless—just a quick wave of the hand, and the system instantly grants entry. This combination of hygiene and elegance sets it apart from other security solutions.

Managing access permissions with the M7 Palm is intuitive. It is easy for administrators to track logs, update user credentials, and control access points remotely. Whether protecting critical assets or monitoring staff access, this system allows for flexible and convenient management while minimizing risk.

## Safety Is More Than Just Yourself —Make a Difference Around You

As users become more aware of security, personalized needs such as privacy and practicality come with it. Through the application of the palm vein and other biometrics, the multi-mode biometrics system can be more accurate in identification and respect users' needs so that everyone can choose to use an accepting identification scheme.

When security measures improve, everyone benefits. Palm vein recognition is reshaping access control across industries, providing tailored solutions for various environments. In retail, it enhances customer safety by ensuring staff-only areas remain restricted and secure. At entertainment venues, it offers a smoother crowd flow, reducing wait times and making large events easier to manage.



For financial institutions, government agencies, and data centers, palm vein recognition serves as an essential layer of defense, ensuring only authorized personnel can access restricted areas. In hospitals and clinics, it helps protect both patient records and pharmaceutical supplies, meeting the high privacy demands of the healthcare sector. The M7 Palm offers a technology that safeguards not just individuals but the entire community.







**ANVIZ**  
Secure Workplace. Simplify Management

# M7 PALM VEIN

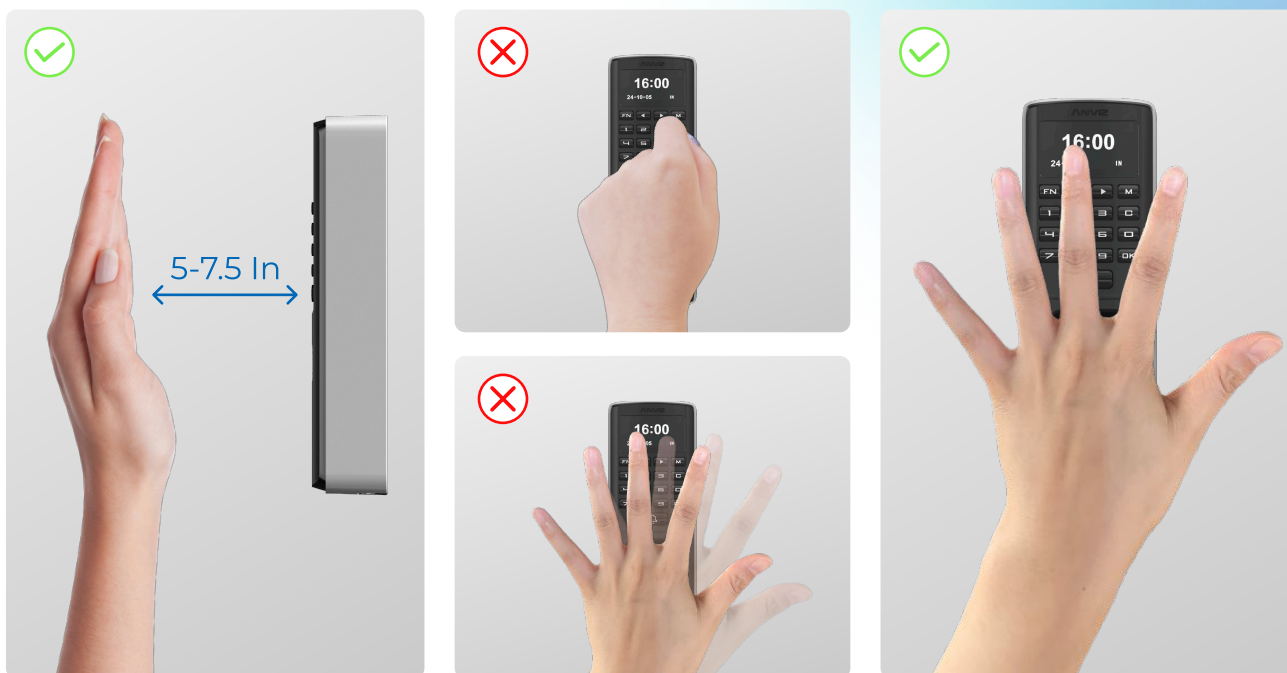
PoE Outdoor Standalone Access Control Terminal  
Most Secure Access with Just a Wave of Elegance

## Invest in Your Security—The **M7 Palm Vein Recognition System**

The M7 Palm is more than just an access control system—it's a future-ready investment designed for environments where security and convenience go hand in hand. Using infrared light, it detects the unique vein patterns beneath the skin, ensuring accurate and foolproof identification. The process is contactless, fast, and user-friendly, making it ideal for locations where hygiene and speed are essential.

One of the key strengths of the M7 Palm is its ability to store biometric templates securely on the device itself. This localized data storage ensures sensitive information never leaves your control, minimizing exposure to cyberattacks or breaches. Regular software updates keep the system running efficiently, ensuring it remains ahead of evolving threats.

## How to use M7 Palm correctly:



### Registration posture

1. The registration distance is **5 to 7.5 inches**.
2. Registered Tilt Angle: The palm is parallel to the module without tilt Angle.
3. Cross-palm registration is recommended.
4. Extend and center your palm parallel to the module plane.
5. Point your palm towards the camera and keep your palm still to complete registration. If you cannot register, please fine-tune the distance.

### Identification mode

1. Identify inclination within **25 degrees**.
2. The identification distance is **4 to 12 inches**.
3. Recommended horizontal palm recognition.
4. Extend and place the palm parallel to the module plane in the center
5. Point the palm towards the camera and keep the palm still to complete the recognition.

Your five fingers should be naturally separated and cannot be bent. If there is a side light or backlight, you can fine-tune the left and right sides of the palm.

The appropriate distance can be measured at about **6.5 inches** from the fingertips to the wrist.

With the M7 Palm, you're not just improving security—you're making life simpler. Whether you're managing access to a high-security facility or creating a more hygienic environment for users, the M7 Palm offers peace of mind with every scan. Discover how it can transform your security approach today: [M7 Palm Vein Recognition](#).

## About Anviz

Over the past 17 years, Anviz Global has been a converged intelligent security solution provider for SMBs and enterprise organizations worldwide. The company provides comprehensive biometrics, video surveillance, and security management solutions based on the Internet of Things (IoT) and AI technologies.

Anviz's diverse customer base spans industries such as commercial, education, manufacturing, and retail. Its extensive partner network supports more than 200,000 companies to smarter, safer, and more secure operations and buildings.



 <p>Secure Workplace, Simplify Management</p>	<p><b>Xthings Inc.</b> 32920 Alvarado-Niles Rd Ste 220, Union City, CA 94587 Toll-free: 1-855-268-4948   <a href="mailto:sales@anviz.com">sales@anviz.com</a>   <a href="http://www.anviz.com">www.anviz.com</a></p> <p><small>©2024 Xthings Inc. Anviz and identifying product names and numbers herein are registered trademarks of Xthings Inc. All non-Anviz brands and product names are trademarks or registered trademarks of their respective companies. Product appearance, build status and/or specifications are subject to change without notice.</small></p>	<p>Powered by <b>Xthings</b></p>
--	---	--------------------------------------